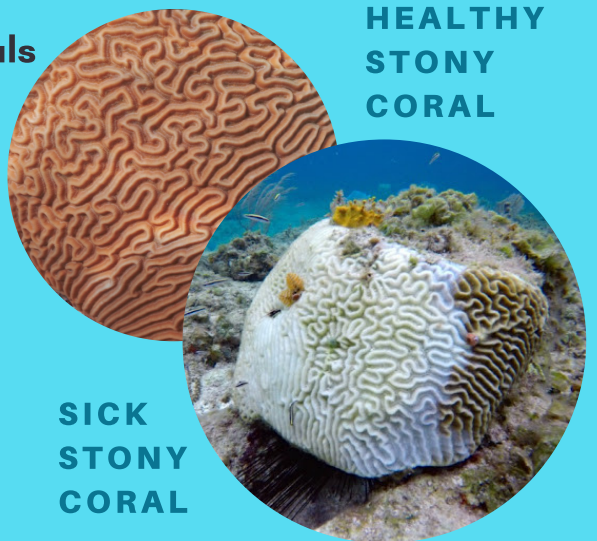


WHAT YOU SHOULD KNOW ABOUT Stony Coral Tissue Loss Disease (SCTLD)

- It's a harmful disease that attacks stony corals such as brain coral, star corals, etc.
- It is waterborne and may spread through direct contact.
- It has been found on reefs in Florida, throughout the Caribbean, and now The Bahamas.



HELP THE BAHAMAS GET AHEAD OF THE SPREAD



Snap a picture of the potentially infected reef.



Record the GPS location, dive site, and date.



Submit Online
perryinstitute.org/scfld

OR



Download the mobile app:
BESTPROTECT242



Text GPS coordinates to
(242)808-2946
or **(242)804-9470**
to report a potentially infected reef.



DIVERS & FISHERS

REMEMBER TO SANITIZE GEAR AFTER EACH DIVE

DIVE → SOAK → RINSE → AIR DRY

⌚ 5 MIN.

Add **3-4 full caps of bleach*** to 1 gallon of fresh or seawater

*Suggested brand: Blanco

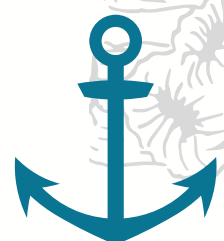
DISPOSAL ⌚ 1 DAY

Leave wash solution in the sun for **1 DAY** to break down then dispose.

Soaking gear onboard a vessel will require the individual to **obtain a permit to have bleach onboard**. Permits can be obtained by visiting the Department of Marine Resources office.

BOATERS

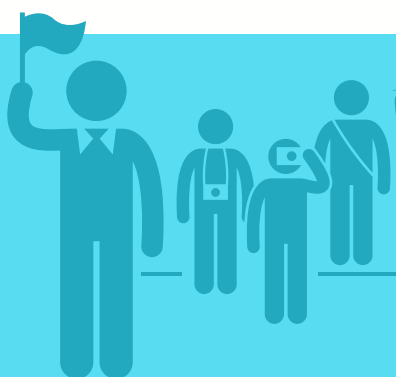
PLEASURE CRAFTS AND COMMERCIAL VESSELS



- Disinfect bilge water with sodium percarbonate* between dive sites.
- Commercial ships must properly exchange ballast water. *It's the law.*

*Suggested brand: Earthborn Elements

Visit **The Bahamas Laws Online** to read more about safe practices in exchanging ballast water and The Bahamas National Trust website (www.bnt.bs) to read more on how to prevent the spread of SCTLD.



VISITORS

ARRIVING BY BOAT OR ENJOYING THE WATER

- **Never touch corals.**
- Dive on healthy reefs before diving on infected reefs.
- Rent gear locally to limit disease spread.

Port Authorities Act

http://laws.bahamas.gov.bs/cms/images/LEGISLATION/PRINCIPAL/1962/1962-0014/PortsAuthoritiesAct_1.pdf

Pilotage Port of Nassau Rules

http://laws.bahamas.gov.bs/cms/images/LEGISLATION/SUBORDINATE/1952/1952-0033/PilotagePortofNassauRules_1.pdf

Environmental Health Services Act

http://laws.bahamas.gov.bs/cms/images/LEGISLATION/PRINCIPAL/1987/1987-0004/EnvironmentalHealthServicesAct_1.pdf

Copy and paste these links in your browser to read the relevant documents

IF WE CATCH SCTLD EARLY WE CAN PREVENT ITS SPREAD TO OTHER CORALS ON THE REEF. LET'S WORK TOGETHER TO PROTECT OUR OCEAN!

PARTNERING ORGANIZATIONS

