

SAFEGUARDING  
THE JEWEL OF THE

**bahamas**  
**now &**  
**tomorrow**

BAHAMAS NATIONAL TRUST  
**EXUMA CAYS LAND & SEA PARK**



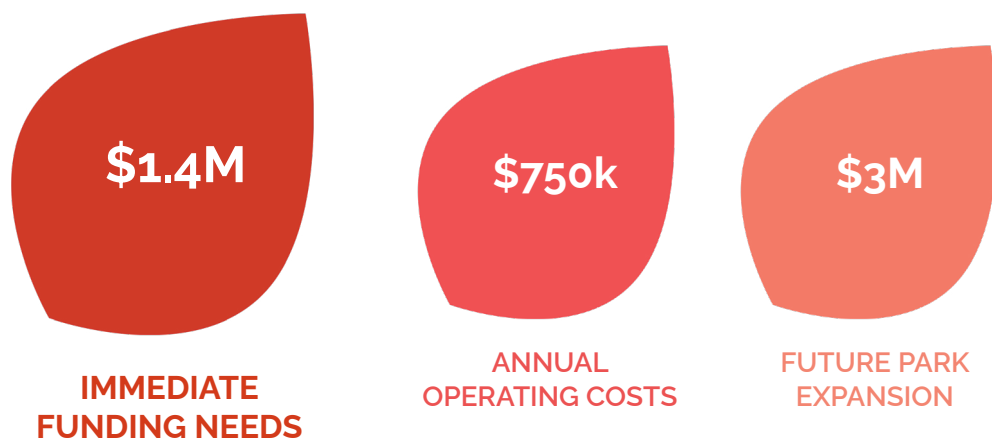




# EXECUTIVE SUMMARY

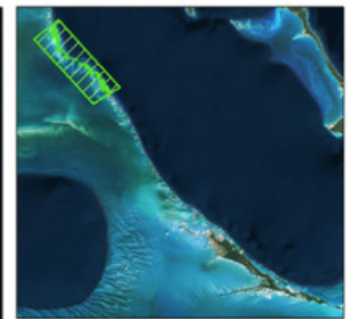
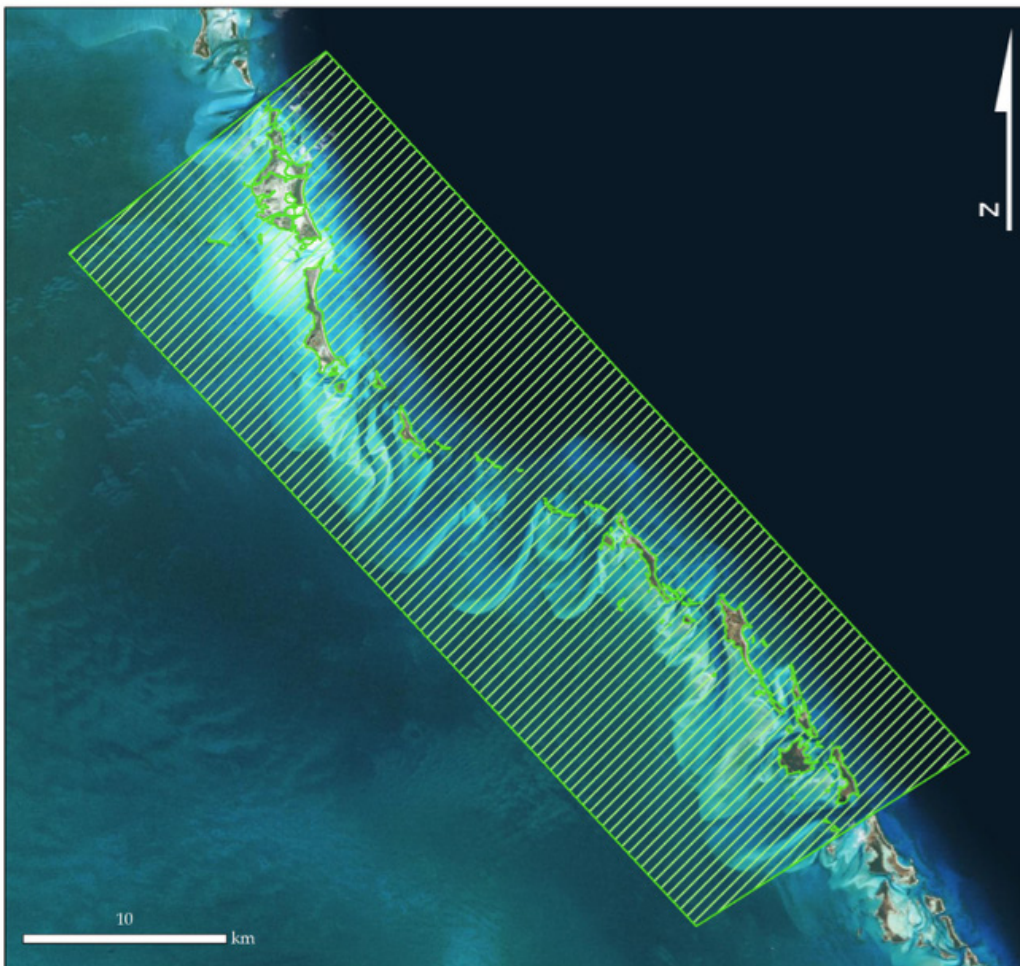
The story of The Bahamas National Trust (BNT) begins with the Exumas and continues to thrive today because of the conservation and management work implemented in the archipelago. **The Exuma Cays Land & Sea Park (ECLSP) was established in 1958 as the first park of its kind in the world.** A year later, the BNT was created to manage the ECLSP, and since 1982, the BNT has been successfully managing this park as a no-take marine reserve, achieving global recognition as an outstanding marine protected area.

Now over 60 years into managing ECLSP, the BNT wants to elevate its impact by building new infrastructure, expanding enforcement, and fortifying its funding model to become more sustainable. ECLSP is one of the more sustainable parks in the country because of its high volume of visitors and there is great opportunity to expand the BNT's presence and visitor engagement. The park receives revenue from mooring and other visitor fees to help cover the cost of operations, but with this vision for expansion, capital and operational funding is required.





## Exuma Cays Land & Sea Park (ECLSP)



Established: 1958  
Size: 174,194 Acres (70,494 Hectares)  
Island: Exuma Cays  
Protects: Marine and terrestrial habitats,  
fisheries, and bird nesting areas

Service Layer Credits: Source: Esri, DigitalGlobe, GeoEye, i-cubed, USDA, USGS, AEX, Getmapping, Aerogrid, IGN, IGP, swisstopo, and the GIS User Community

# Immediate Capital Funding Needs

PHASE 1:  
**\$550,000**  
Shell Building

PHASE 2:  
**\$850,000**  
Interior Fitout

## STEM Building For Science-Based Conservation & Education

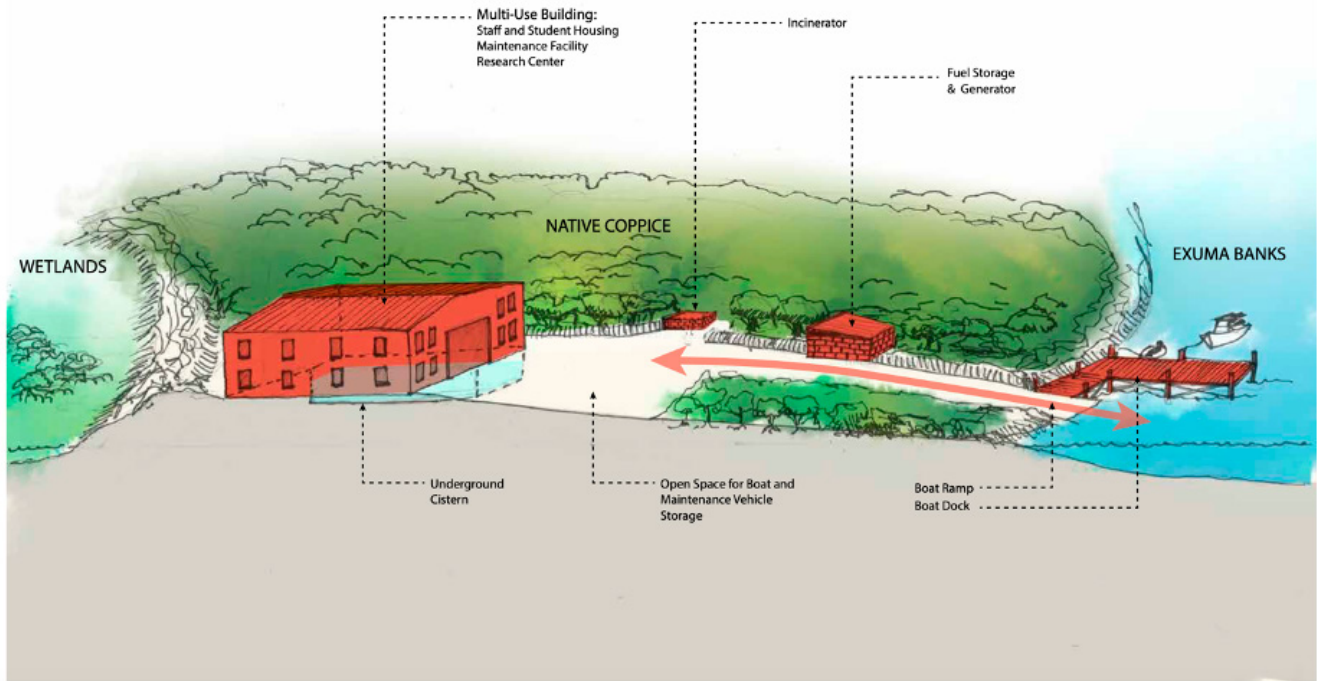
**\$1.4 million**

Our STEM (Science, Technology, Education, and Maintenance) building is an essential part of the growth of the ECLSP and the surrounding community. This new facility will equip the ECLSP with the infrastructure and support systems vital to our present and planned operations. The multipurpose building will be key to maintaining the delicate balance of managing this very special place. It will serve as an administrative and enforcement base for the BNT as well as a venue to house visiting scientists and students.

### The STEM building will provide the following important facilities and systems:

- Comfortable living accommodations for 8 additional ECLSP staff
- Modern workshop with redundant systems, offering reliability and uninterrupted operations
- Accommodation for 20 students visiting the park on nature-based learning experiences
- Wet lab and other support services for visiting research scientists
- 37,000 gallon fresh water tank and waste management systems

# Stem Building Artistic Rendering



# Proposed Site Plan





# Future Expansion Funding Opportunities

**\$2 million**  
Warderick Wells  
Infrastructure

**\$750,000**  
Warden  
Outposts

**\$500,000**  
Enhanced  
Enforcement

**The top priority in 2021 is to fund the construction of a multipurpose STEM building at Warderick Wells. The other goals listed here are for projects slated in 2022 and beyond.**

## **Warderick Wells Infrastructure**

Rehabilitation of existing buildings is crucial as is the rebuilding of the welcome dock. Significant investment in changing the purpose of these facilities to be more focused on park-user-experiences such as retail and concessions will generate income to support operations. Additional infrastructure goals include the construction of a brand new service dock, boat ramp, fuel depot, and generator platform. The property buildout will utilize the most advanced technologies in sustainable energy and green waste management standards. Additional investment will also allow for the construction of a wet lab, the installation of signage and a solar power system and the purchase of two all-terrain vehicles, four boats and science equipment.

## **Warden Outposts**

Two new (north and south) outposts will be used by the BNT park wardens and Royal Bahamas Defense Force officers to support the enhanced park enforcement program. The north and south warden outposts will act as park boundary strongholds in areas of the park that are difficult to access as well as serve as a new communications hub and center for the removal of invasive species.

## **Enhanced Enforcement**

Enforcement plays a vital role in marine protected area development and operational success. Patrol vessels, a utility landing craft, and drone technology are critical for resource protection. We are also currently working to develop an Unmanned Aerial Surveillance (UAS) system to aid in the reduction of Illegal, Unregulated, Unreported (IUU) fishing and other illegal activities that occur within the park.



# Annual Operations of a Sustainably Funded Park

**\$750,000**  
Current Annual  
Operating Costs

A fully functional park in a remote environment requires a dynamic staff of 11 full-time employees, reliable power, and communications systems, as well as constant maintenance. These things require critical funding to sustain programs and operations on an annual basis, now and into the future.

In recent years, the ECLSP has become a more sustainably funded protected area with some annual revenue through park visitation, anchorage and mooring fees, and fleet memberships supporting operational costs. As we plan to expand the BNT's infrastructure and capacity to safeguard the Exumas, it is expected that operational costs will increase by \$200-300k annually.





# For the Parks. For the Country. For the Future.

The crowning jewel in The Bahamas is arguably the Exuma chain of islands. As a steward of the first and one of the most lauded land and sea parks in the world, the BNT is seeking philanthropic partners to continue to protect this area and enhance its operations so that generations to come can enjoy this beauty.

**Get in Touch**  
supporttheparks@bnt.bs



@bahamasnationaltrust  
**#exploreyourpark**



www.bnt.bs